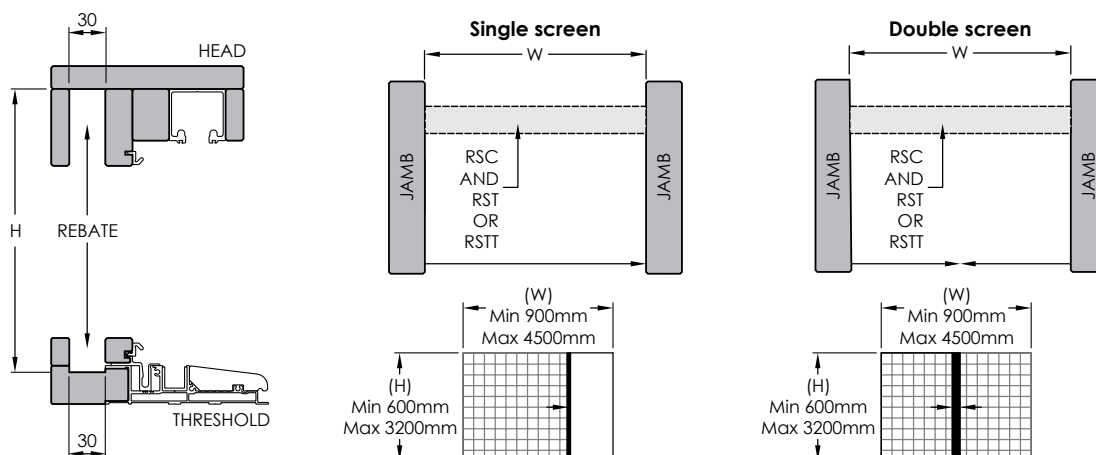


Screen sizes:

Width - screen reduces in width to the size of the next smallest screen, eg. a 3600mm wide screen can be installed in an opening that is between 2700mm-3600mm wide. Height - each screen can be cut down by up to 200mm.



Codes

Screen:

RSDL 800 - 1100 PBK
 PBK (powder coat black),
 PWT (powder coat white),
 PGY (powder coat silver)
 Screen frame width (W)
 Screen frame height (H)
 Brio 612 retractable
 pleated insect screen

Frame kit:

KIT - 7 - L PBK
 PBK (powder coat black),
 PWT (powder coat white),
 PGY (powder coat silver)
 L (low head track),
 T (tall head track system),
 R (retro fit extrusions,
 Framing Kit No.

Frame kit selection:

Applies to Data Sheet G40 and G50

| | | Screen width (W) mm | | | | | |
|----------------------|-------------|---------------------|-------------|-------------|-------------|-------------|-------------|
| | | 900 - 1100 | 1100 - 1500 | 1500 - 2000 | 2000 - 2700 | 2700 - 3600 | 3600 - 4500 |
| Screen height (H) mm | 3000 - 3200 | KIT-9 | KIT-9 | KIT-10 | KIT-11 | KIT-12 | KIT-12 |
| | 2800 - 3000 | KIT-9 | KIT-9 | KIT-10 | KIT-11 | KIT-12 | KIT-12 |
| | 2600 - 2800 | KIT-9 | KIT-9 | KIT-10 | KIT-11 | KIT-12 | KIT-12 |
| | 2400 - 2600 | KIT-9 | KIT-9 | KIT-10 | KIT-11 | KIT-12 | KIT-12 |
| | 2200 - 2400 | KIT-5 | KIT-5 | KIT-6 | KIT-7 | KIT-8 | KIT-8 |
| | 2000 - 2200 | KIT-5 | KIT-5 | KIT-6 | KIT-7 | KIT-8 | KIT-8 |
| | 1800 - 2000 | KIT-5 | KIT-5 | KIT-6 | KIT-7 | KIT-8 | KIT-8 |
| | 1600 - 1800 | KIT-5 | KIT-5 | KIT-6 | KIT-7 | KIT-8 | |
| | 1400 - 1600 | KIT-5 | KIT-1 | KIT-2 | KIT-3 | KIT-4 | |
| | 1200 - 1400 | KIT-5 | KIT-1 | KIT-2 | KIT-3 | | |
| | 1000 - 1200 | KIT-1 | KIT-1 | KIT-2 | KIT-3 | | |
| | 800 - 1000 | KIT-1 | KIT-1 | KIT-2 | | | |
| | 600 - 800 | KIT-1 | KIT-1 | KIT-2 | | | |

Double screen applications use a combination of 2 screens to suit panel configuration and position of access doors

Frame kit selection:

Applies to Data Sheet G60

Single screen

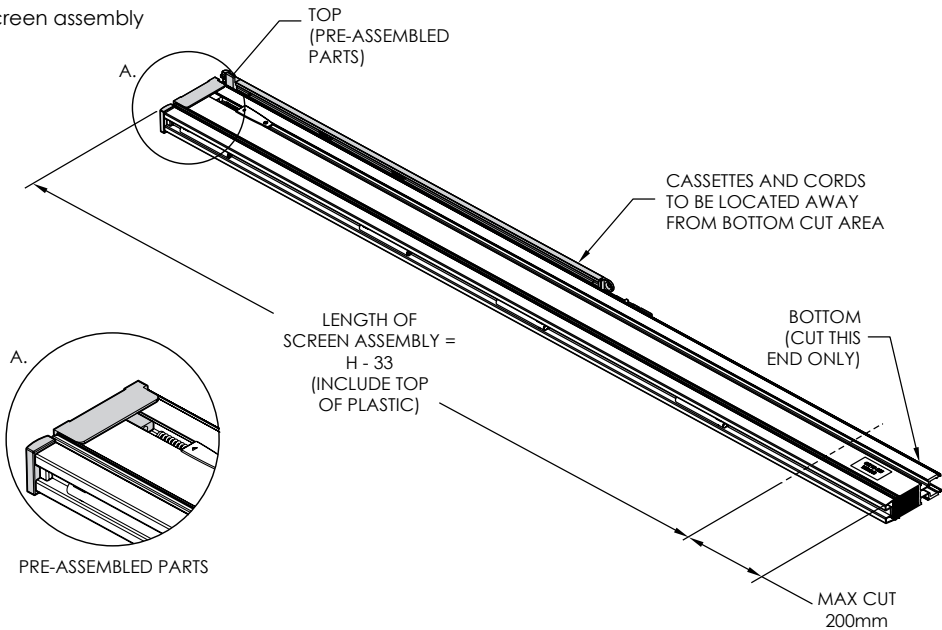
| | | Screen width (W) mm | |
|----------------------|-------------|---------------------|-------------|
| | | 900 - 3000 | 3000 - 4500 |
| Screen height (H) mm | 2200 - 3200 | KIT-11 | KIT-12 |
| | 900 - 2200 | KIT-7 | KIT-8 |

Meeting screen

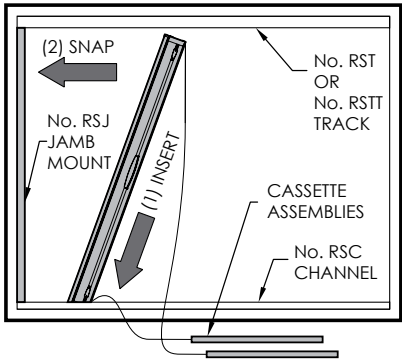
| | | Screen width (W) mm | |
|----------------------|-------------|---------------------|-------------|
| | | 2000 - 3000 | 3000 - 4500 |
| Screen height (H) mm | 2200 - 3200 | KIT-26 | KIT-27 |
| | 900 - 2200 | KIT-22 | KIT-23 |

Screen install overview:

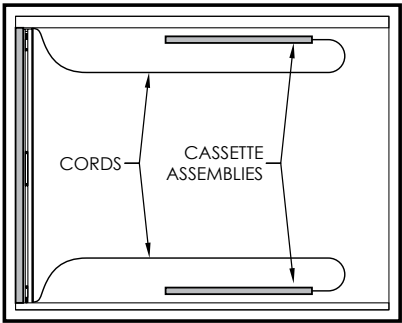
1. Cutting screen assembly



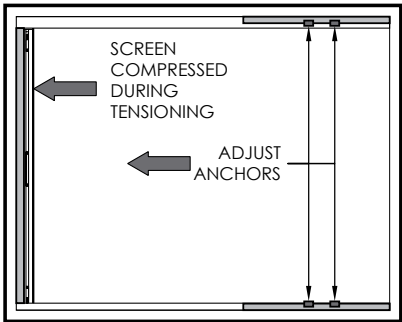
2. Install screen assembly



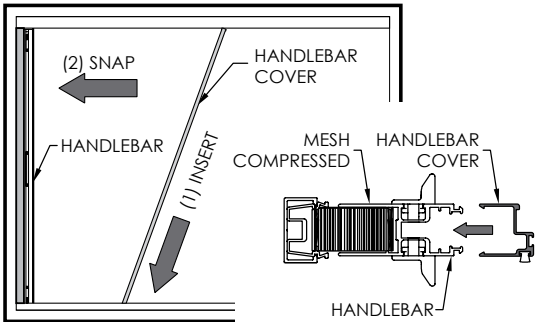
3. Install cassette



4. Tension cords



5. Fit handlebar cover



Application

Suitable for residential screening of folding windows and doors.

Aluminium frame is available in three standard powder coat colours: black, silver and white. Custom colours are also available upon request.

Assembled with high grade materials to ensure quality is maintained. UV stable pleated mesh and high strength, braided tensioning cords allow the screen to operate smoothly.

Opening Specification

Screen System:

For Individual Screens:

| | |
|--------------------|--------|
| Max Opening Height | 3200mm |
| Min Opening Height | 600mm |
| Max Opening Width | 4500mm |
| Min Opening Width | 900mm |

612 Folding Frame

Openings can use two screens in total, one screen in each direction providing a total span of 9000mm wide. Aluminium lengths are supplied in kits, for more information see Data Sheets G30.

Screen heights can be cut down by 200mm to accommodate exact sizes.

Corner applications are also possible.

Hardware Specification

Screen:

RSDLXXXX-XXXXXXX

For RSDL sizing codes, see Data Sheet G30.

Channel:

RSC

Powder coated aluminium channel.

Track:

Track RST

Powder coated aluminium track, used in KIT-X-LXXX

Tall track

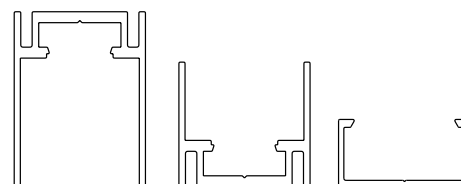
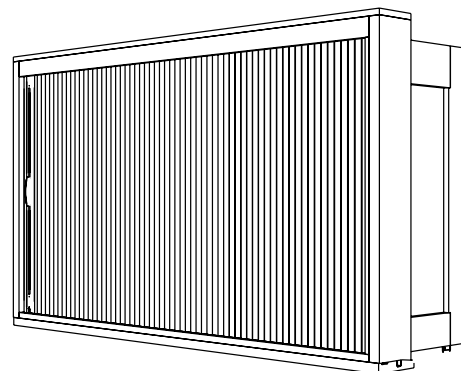
RSTT

Powder coated aluminium track, used in KIT-X-TXXX

Jamb Mount:

RSJ

Powder coated aluminium jamb mount.

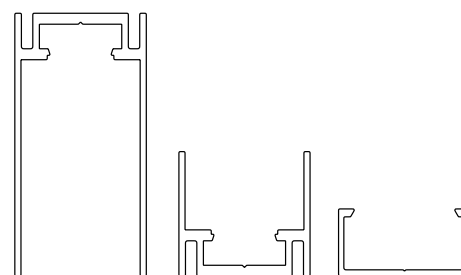


No. RST
TRACK

No. RSC
CHANNEL

No. RSJ
JAMB

No. KIT-X-LXXX
FRAME KIT

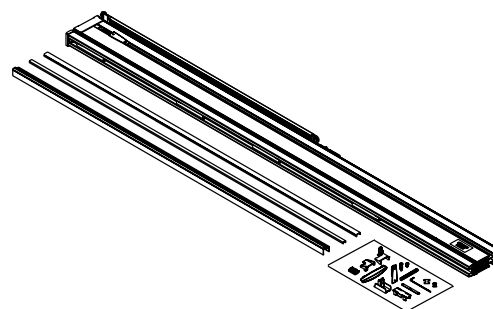


No. RSTT
TALL TRACK

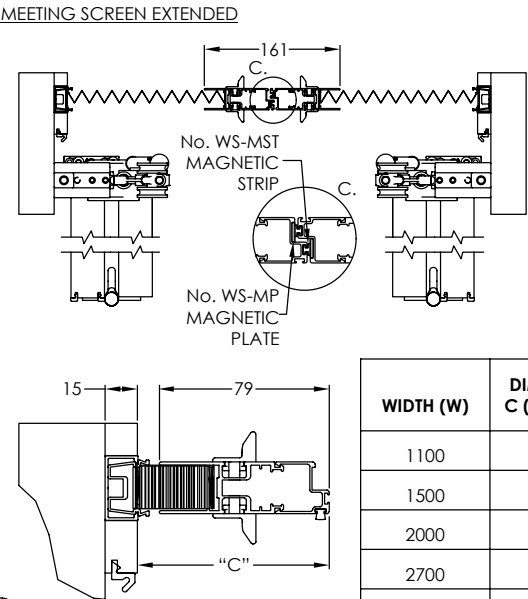
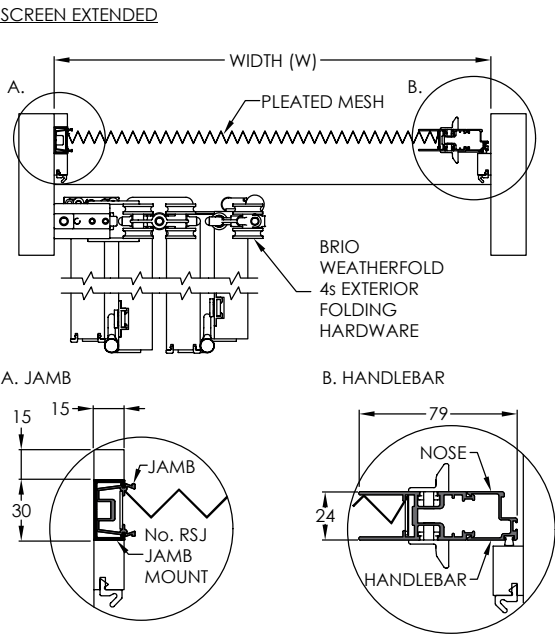
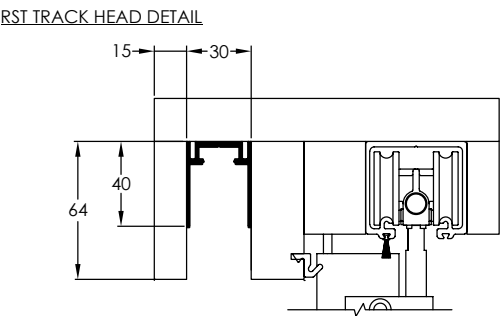
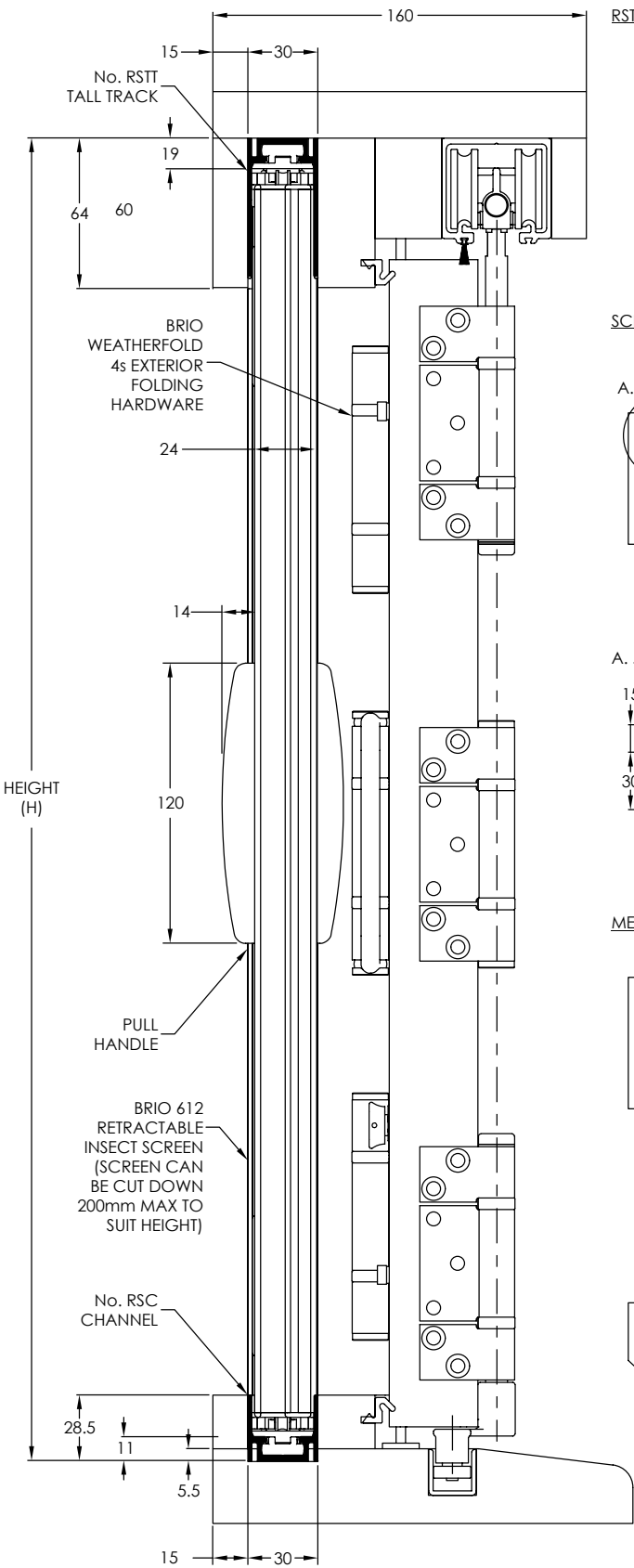
No. RSC
CHANNEL

No. RSJ
JAMB

No. KIT-X-TXXX
FRAME KIT



No. RSDLXXXX-XXXXXXX
SCREEN



| WIDTH (W) | DIMENSION C (OVERALL) |
|-----------|-----------------------|
| 1100 | 85 |
| 1500 | 95 |
| 2000 | 108 |
| 2700 | 125 |
| 3600 | 158 |
| 4500 | 185 |

Application

Suitable for residential screening of sliding windows and doors.

Aluminium frame is available in three standard powder coat colours: black, silver and white. Custom colours are also available upon request.

Assembled with high grade materials to ensure quality is maintained. UV stable pleated mesh and high strength, braided tensioning cords allow the screen to operate smoothly.

Opening Specification

Screen System:

For Individual Screens:

| | |
|--------------------|--------|
| Max Opening Height | 3200mm |
| Min Opening Height | 600mm |
| Max Opening Width | 4500mm |
| Min Opening Width | 900mm |

612 Sliding Frame

Openings can use two screens in total, one screen in each direction providing a total span of 9000mm wide. Aluminium lengths are supplied in kits, for more information see Data Sheets G30.

Screen heights can be cut down by 200mm to accommodate exact sizes.

Corner applications are also possible.

Hardware Specification

Screen: RSDLXXXX-XXXXXXX

For RSDL sizing codes, see Data Sheet G30.

Channel: RSC

Powder coated aluminium channel.

Track:

Track RST

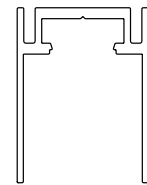
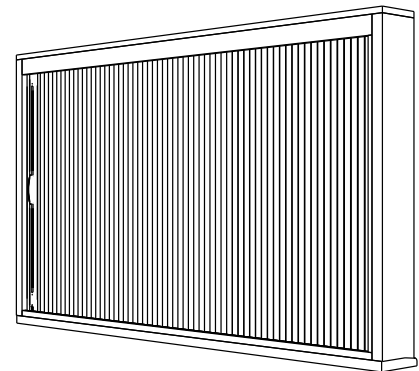
Powder coated aluminium track, used in KIT-X-LXXX

Tall track RSTT

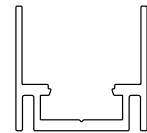
Powder coated aluminium track, used in KIT-X-TXXX

Jamb Mount: RSJ

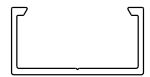
Powder coated aluminium jamb mount.



No. RST
TRACK

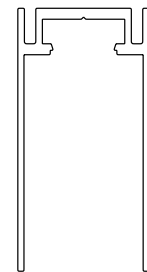


No. RSC
CHANNEL

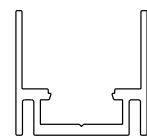


No. RSJ
JAMB

No. KIT-X-LXXX
FRAME KIT



No. RSTT
TALL TRACK

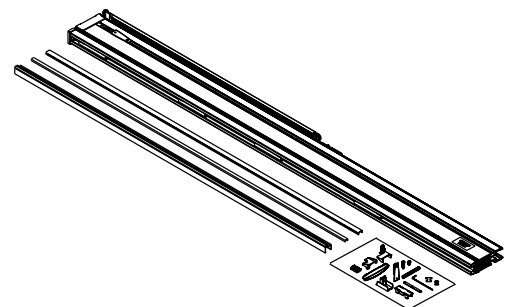


No. RSC
CHANNEL

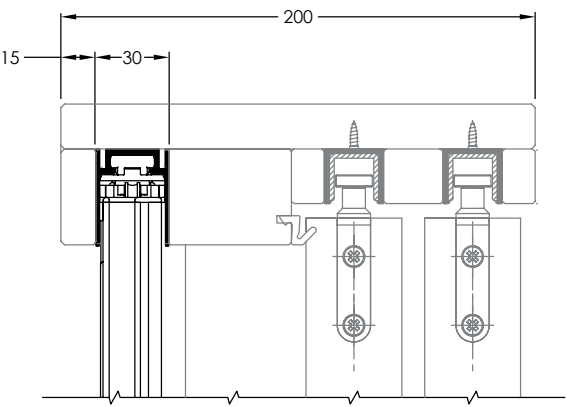
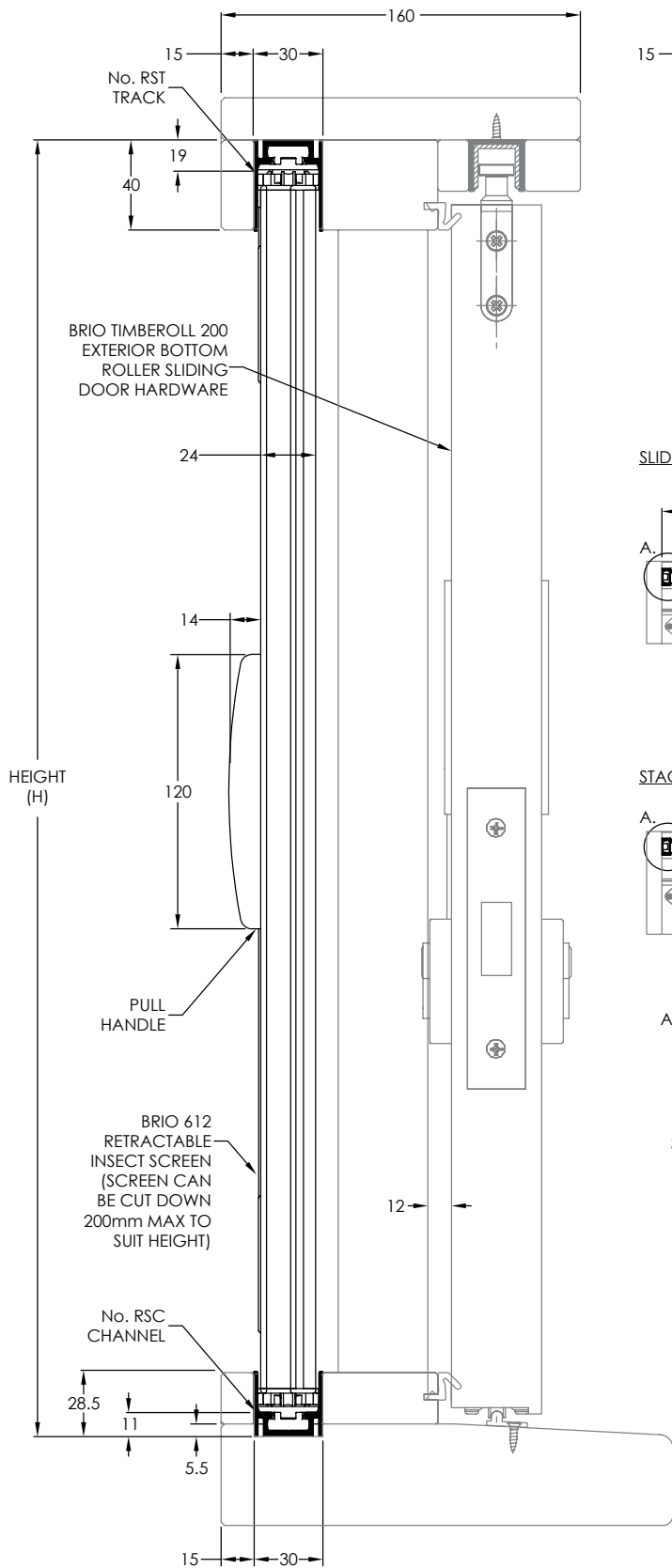


No. RSJ
JAMB

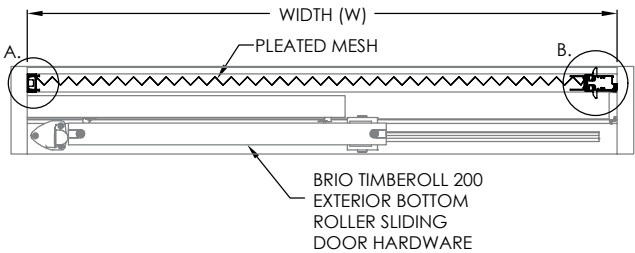
No. KIT-X-TXXX
FRAME KIT



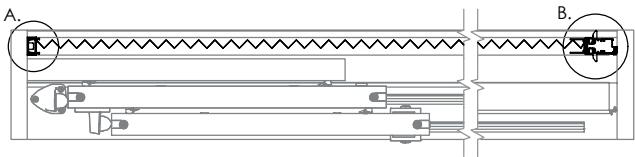
No. RSDLXXXX-XXXXXXX
SCREEN



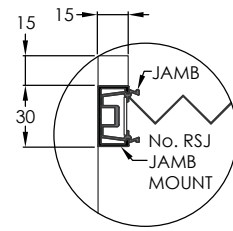
SLIDING DOOR - SCREEN EXTENDED



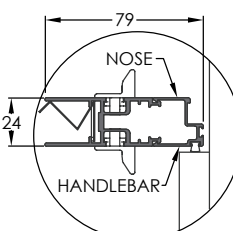
STACKING DOOR - SCREEN EXTENDED



A. JAMB



B. HANDLEBAR



Application

Suitable for residential screening of folding or sliding windows and doors with suitable outer frame for installation.

Aluminium frame is available in three standard powder coat colours: black, silver and white. Custom colours are also available upon request.

Assembled with high grade materials to ensure quality is maintained. UV stable pleated mesh and high strength, braided tensioning cords allow the screen to operate smoothly.

Opening Specification

| | |
|-------------------------|---------------------------|
| Screen System: | 612 Retrofit Frame |
| For Individual Screens: | |
| Max Opening Height | 3200mm |
| Min Opening Height | 600mm |
| Max Opening Width | 4500mm |
| Min Opening Width | 900mm |

Openings can use two screens in total, one screen in each direction providing a total span of 9000mm wide. Aluminium lengths are supplied in kits, for more information see Data Sheets G30.

Screen heights can be cut down by 200mm to accommodate exact sizes.

Hardware Specification

Screen: RSDLXXXX-XXXXXXX

For RSDL sizing codes, see Data Sheet G30.

Channel: RSCE

Powder coated aluminium channel with reinforced wall thickness.

Track: RSTTE

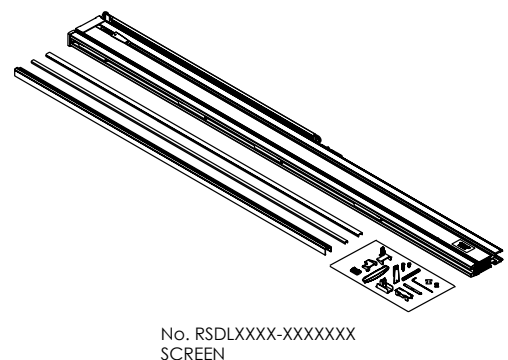
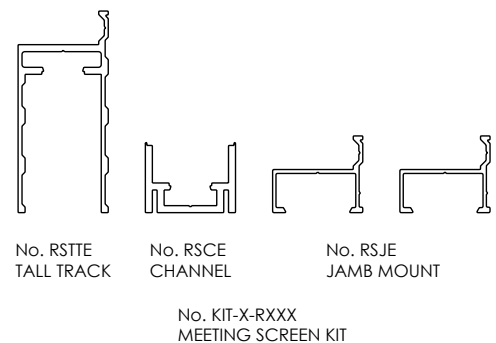
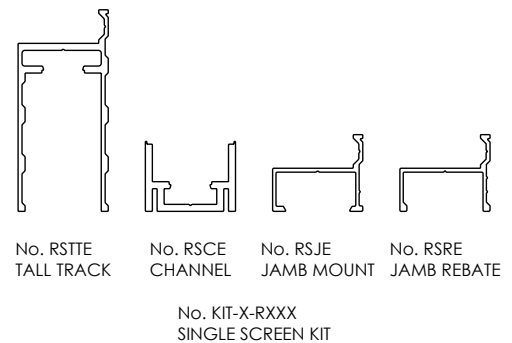
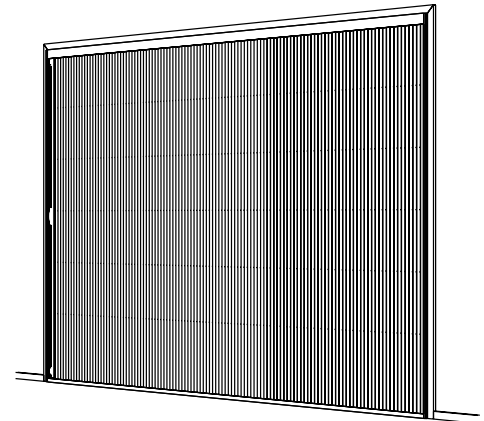
Powder coated aluminium track with face fix screw point. Fixings not included.

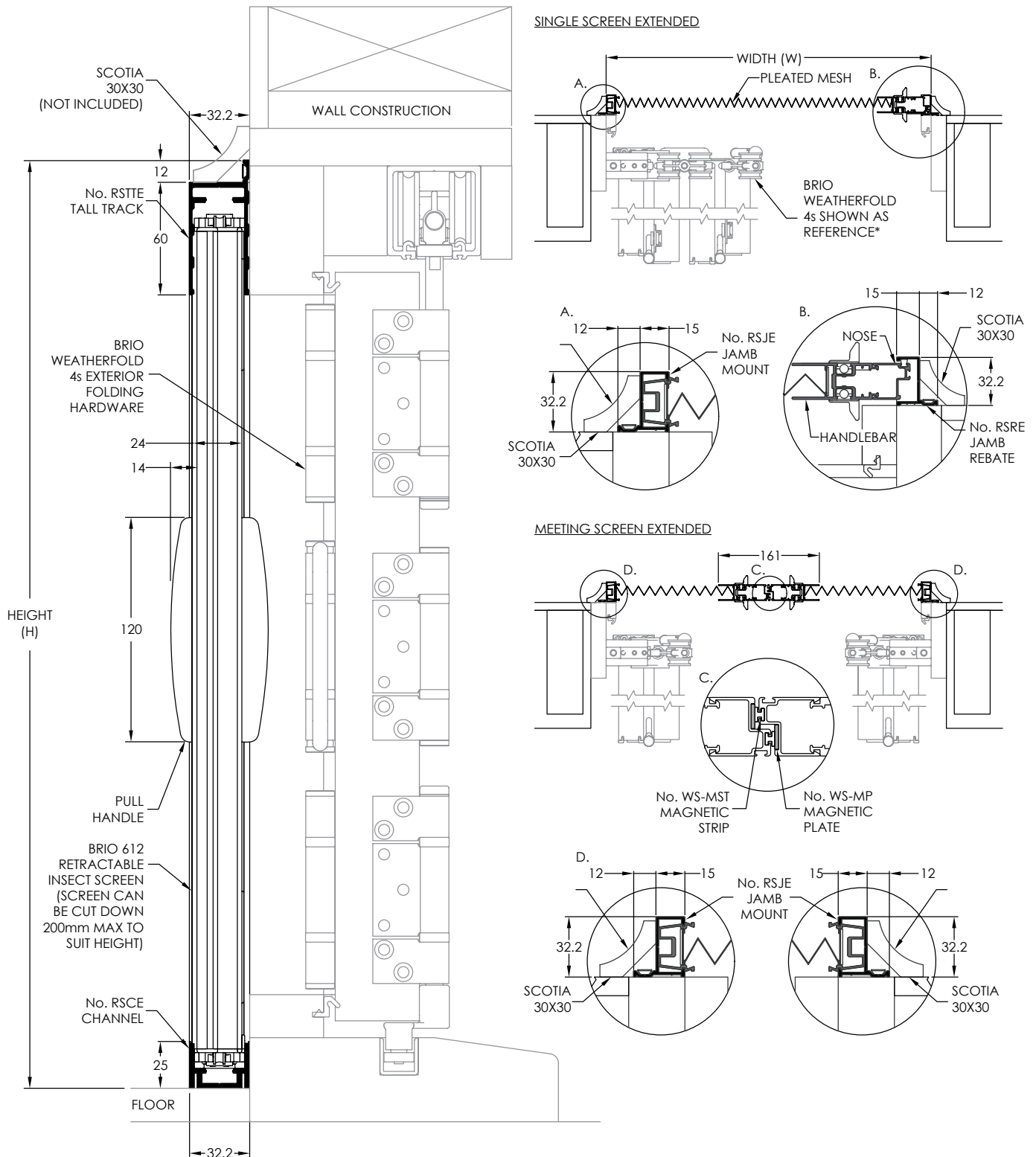
Jamb Mount: RSJE

Powder coated aluminium jamb mount with face fix screw point. Fixings not included.

Jamb Rebate: RSRE

Powder coated aluminium jamb rebate with face fix screw point. Fixings not included. Jamb rebates not included in meeting retrofit kits.





*RETRO FIT SYSTEMS ARE SUITABLE TO ALL PRE-EXISTING FOLDING OR SLIDING DOOR SYSTEMS WITH SUITABLE OUTER FRAME